
Self – Check System

System Requirements

(Rev.4.0)

Last update Feb 5, 2024

[Operation Requirement]

■ OS (Operation System)

Please use Windows 10.

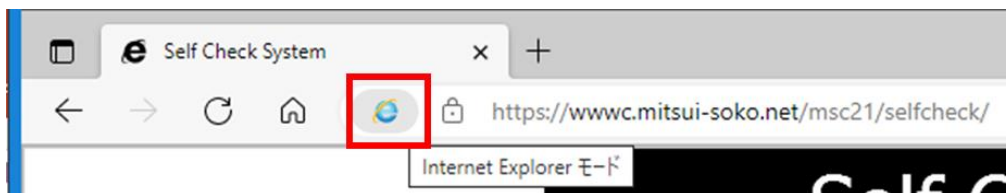
■ About the Browser

Please use Microsoft Edge (IE mode).

(※ This system requires Edge to start in IE mode.)

When connecting to this system, please check that the IE mode icon is displayed on the left side of the URL.

If the IE mode icon is not displayed, refer to page 3 and change the Edge settings.



■ About Security

This system is encrypting the communication by the SSL(Secure Socket Layer) cryptographic technology for the security protection.

■ About the Installation of the Report Print Tool

PRINTPRO for web (Flex1.10) is used as the Report Print Tool in this system.

Please install the PRINTPRO for web tool before using the system.

(※ You can do the download of PRINTPRO for web from the [TOOLS] menu of *Self Check System*)

Please refer to page 5 for the installation procedure of PrintPro for web.

■ About the compulsion cutting after logging

As for this system, if there is not any screen input in 60 minutes or more, the connection is automatically cut because of the security protection. All the data being input (unregistration) is canceled in that time.

The system can be used by logging again, after the compulsion cutting is done.

■ URL

<https://wwwc.mitsui-soko.net/msc21/selfcheck/>

※ Login ID and the password are necessary for using the system.

■ About Settings of Microsoft Edge

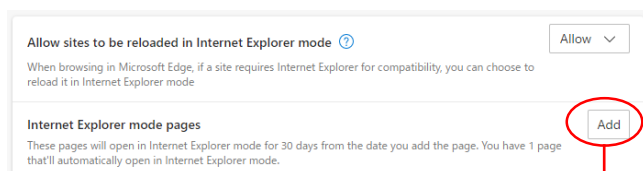
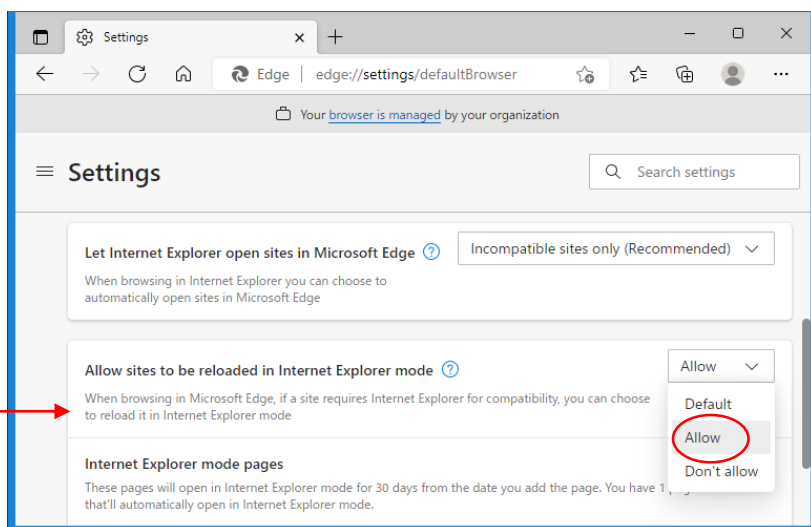
Press [settings] - [Default browser] to change the settings in Microsoft Edge Browser.

(1) Set the self-check system to start in IE mode.

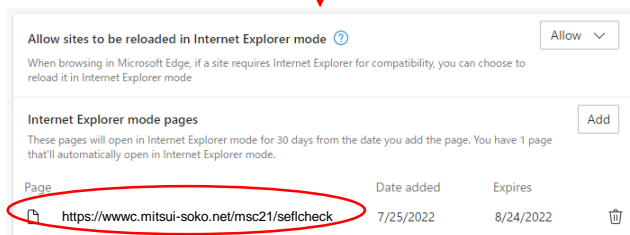
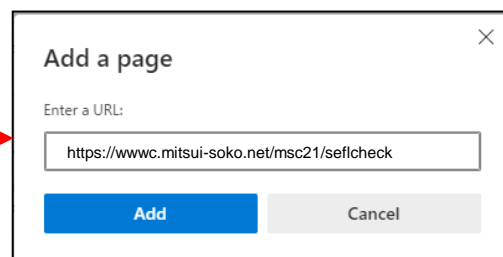
Settings

- Start, home, and new tabs
- Share, copy and paste
- Cookies and site permissions
- Default browser**
- Downloads
- Family safety
- Languages
- Printers

Select "Allow" for "Allow sites to be reloaded in Internet Explorer mode".



<https://wwwc.mitsui-soko.net/msc21/selfcheck>
Enter and click Add.



It is OK, if 「<https://wwwc.mitsui-soko.net/msc21/selfcheck>」 is displayed in "Internet Explorer mode page".

※ The expiration date is 30 days from the date of addition. If the expiration date has expired, please re-register.

■ About Settings of Microsoft Edge

Press [settings] - [Cookies and site permissions] to change the settings in Microsoft Edge Browser.

(2) Allow the pop-up blocker.

≡ Settings

Select "Allow" for "Allow sites to be reloaded in Internet Explorer mode".

Start, home, and new tabs

Share, copy and paste

Cookies and site permissions

Default browser

Downloads

Family safety

Languages

Printers

Settings

Images
Show all

Pop-ups and redirects
Blocked

Ads
Blocked

Settings

Search settings

Block (recommended)

Block

No sites added

Allow

No sites added

Add

https://wwwc.mitsui-soko.net

Enter and click Add.

Add a site

Site

https://wwwc.mitsui-soko.net

Add Cancel

Block

No sites added

Allow

https://wwwc.mitsui-soko.net

...

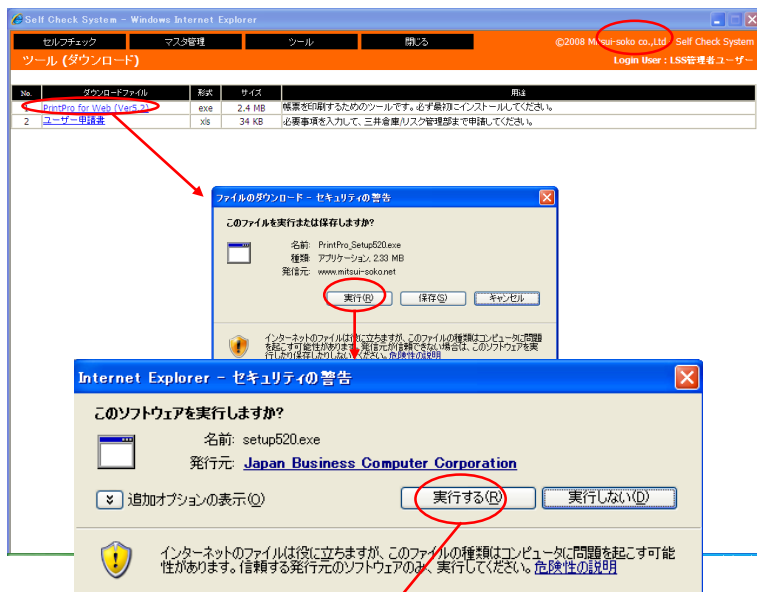
It is OK, if 「https://wwwc.mitsui-soko.net」 is displayed in "Allow"

■ Install the Report Print Tool

Install PRINTPRO for web ,before using this system.

(You can do the download of[PRINTPRO for web] from the [TOOLS] menu in self-check system.)

※ Reports can't be printed without installing the [PRINTPRO for web].

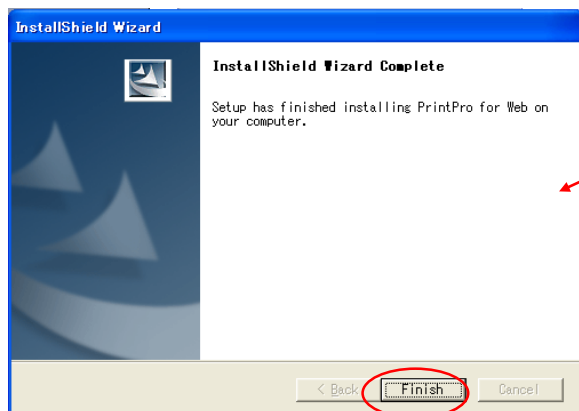
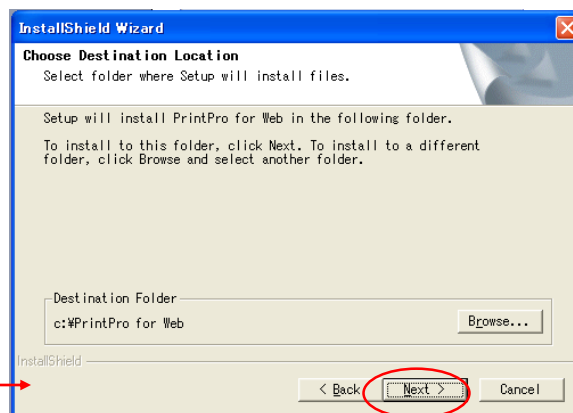
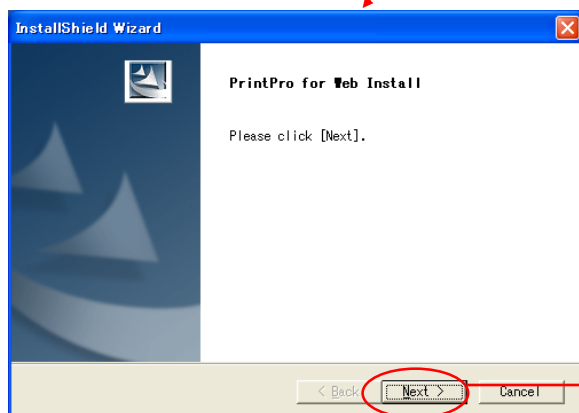


[Manual]

1. Show the 「TOOL」 menu, and press the 「PrintPro for Web (Flex1.10) DOWNLOAD」.
2. Press the 「Execute」 button.

(After download)

3. Press the 「Execute」 button.



(After PRINTPRO Installer beginning)

4. Press the 「Next」 button.

5. It is OK when the Completing page is showed.
Press the 「Finish」 button to close the window.

※ In case you fail to print the documents properly even though PrintPro is installed,
Please try to uninstall PrintPro for Web & install it again.